

Application

Designed to house electrical controls, instruments and components that require unrestricted viewing of the gauges or controls, in areas which may be regularly hosed down or are in very wet or oily conditions. Provides a degree of protection from dust, dirt, oil, and water. For outdoor applications a drip shield is recommended. For installation information, consult our installation manual at www.saginawcontrol.com.

Construction

- 0.063" stainless steel Type 304 & 316/316L.
- Seams continuously welded and ground smooth.
- Flange trough collar around all sides of door opening.
- Pour in place oil and water resistant gasket.
- 0.25" polycarbonate viewing window.
- Standoffs provided for mounting optional subpanels.
- Removable hinge.
- Doors open 180 degrees.
- Black mini quarter turn latches.
- Latches are opened or closed with a screwdriver.
- Sealing washers and hole plugs included.
- Ground stud on door & body.
- Mounting feet included.
- Optional latches available.

Finish

#4 brushed finish on all exterior surfaces. Optional subpanels powder coated white.

Notes

Recommend use as Type 3R rating in full outdoor exposure and extreme weather environments.

For more details see *Design Considerations* on our website.

IS6 Industry Standards

NEMA Type 3R, 4, 4X, 12 & Type 13
UL Listed Type 3R, 4, 4X & 12
CSA Type 3R, 4, 4X & 12
IEC 60529 IP66

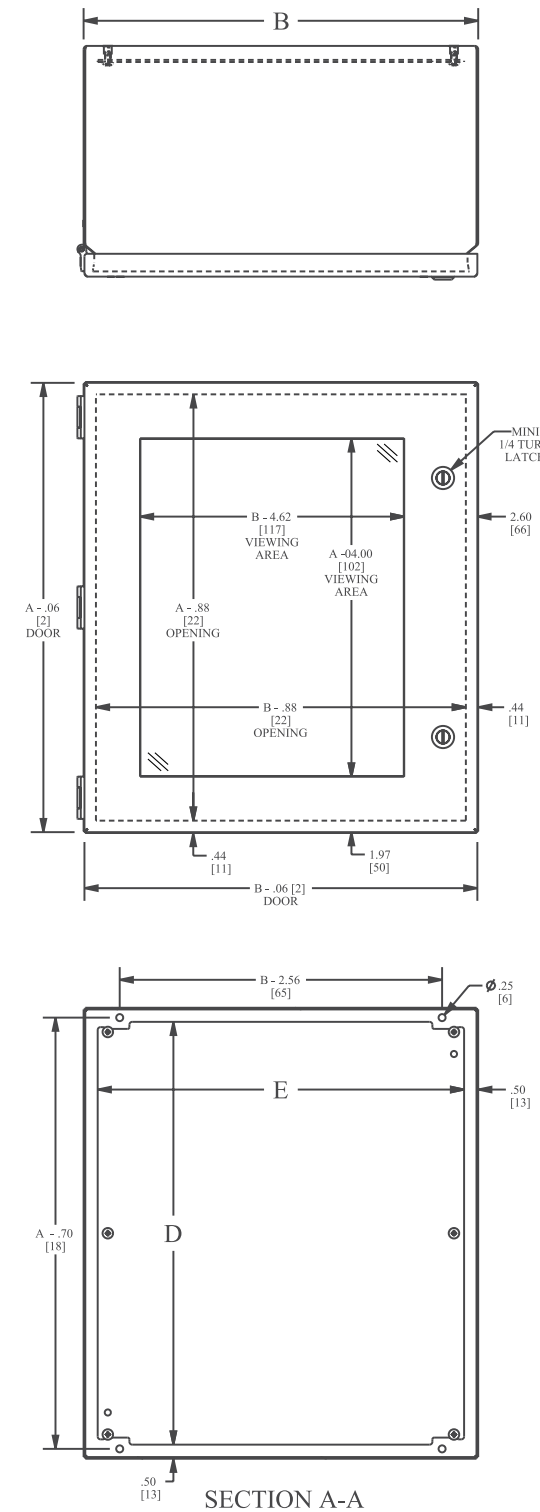
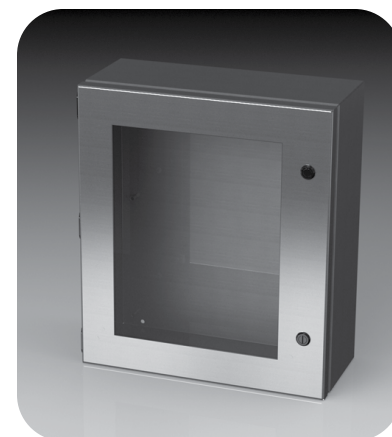
***To maintain Type 3R listing, drainage is required. Install equally rated drainage device or drill a 1/8 to 1/4 inch hole in the bottom center of the enclosure, approximately 1 inch from the right, and 1 inch from the left for drainage, use listed rain-tight or wet location hubs. Drip shield over the door is recommended for all outdoor applications.

304 STAINLESS STEEL

Catalog No.	Enclosure Product Code S6					Subpanel (P3)
	Height (A)	Width (B)	Depth (C)	Window Viewing Size	Industry Standard	
SCE-1008ELJWSS	10.00	8.00	4.00	6.00 x 3.375	IS6	SCE-10P8
SCE-10086ELJWSS	10.00	8.00	6.00	6.00 x 3.375	IS6	SCE-10P8
SCE-1210ELJWSS	12.00	10.00	6.00	8.00 x 5.375	IS6	SCE-12P10
SCE-12108ELJWSS	12.00	10.00	8.00	8.00 x 5.375	IS6	SCE-12P10
SCE-1614ELJWSS	16.00	14.00	6.00	12.00 x 9.375	IS6	SCE-16P14
SCE-16148ELJWSS	16.00	14.00	8.00	12.00 x 9.375	IS6	SCE-16P14

316 STAINLESS STEEL

Catalog No.	Enclosure Product Code S6					Subpanel (P3)
	Height (A)	Width (B)	Depth (C)	Window Viewing Size	Industry Standard	
SCE-1008ELJWSS6	10.00	8.00	4.00	6.00 x 3.375	IS6	SCE-10P8
SCE-10086ELJWSS6	10.00	8.00	6.00	6.00 x 3.375	IS6	SCE-10P8
SCE-1210ELJWSS6	12.00	10.00	6.00	8.00 x 5.375	IS6	SCE-12P10
SCE-12108ELJWSS6	12.00	10.00	8.00	8.00 x 5.375	IS6	SCE-12P10
SCE-1614ELJWSS6	16.00	14.00	6.00	12.00 x 9.375	IS6	SCE-16P14
SCE-16148ELJWSS6	16.00	14.00	8.00	12.00 X 9.375	IS6	SCE-16P14



LATCH NOTES:
One latch centered on the door vertically if height is <= 14.00 [356]
Two latches located 3.00 [76] from top & bottom of door if height is > 14.00 [356]